

LG VoIP ip LDK-600 (Digital Hybrid Key Telephone System)



. LG	3
. ip LDK-600	5
.	5
. ip LDK-600	6
1.	6
2.	7
3.	14
4.	17
5.	18

I. LG

1.

(, , ,) .

2. LG

(ip LDK)

1)

(,)
ISDN 가 (ip LDK-828)
(System Networking) 가

2)

=>

ASIC

PCM

(Dynamic Time Slot)

()
: 1B CH
: 2B CH

3) ISDN

(ip LDK-828)

4) VoIP

ip LDK-Series Networking
가 (H.323 SIP)

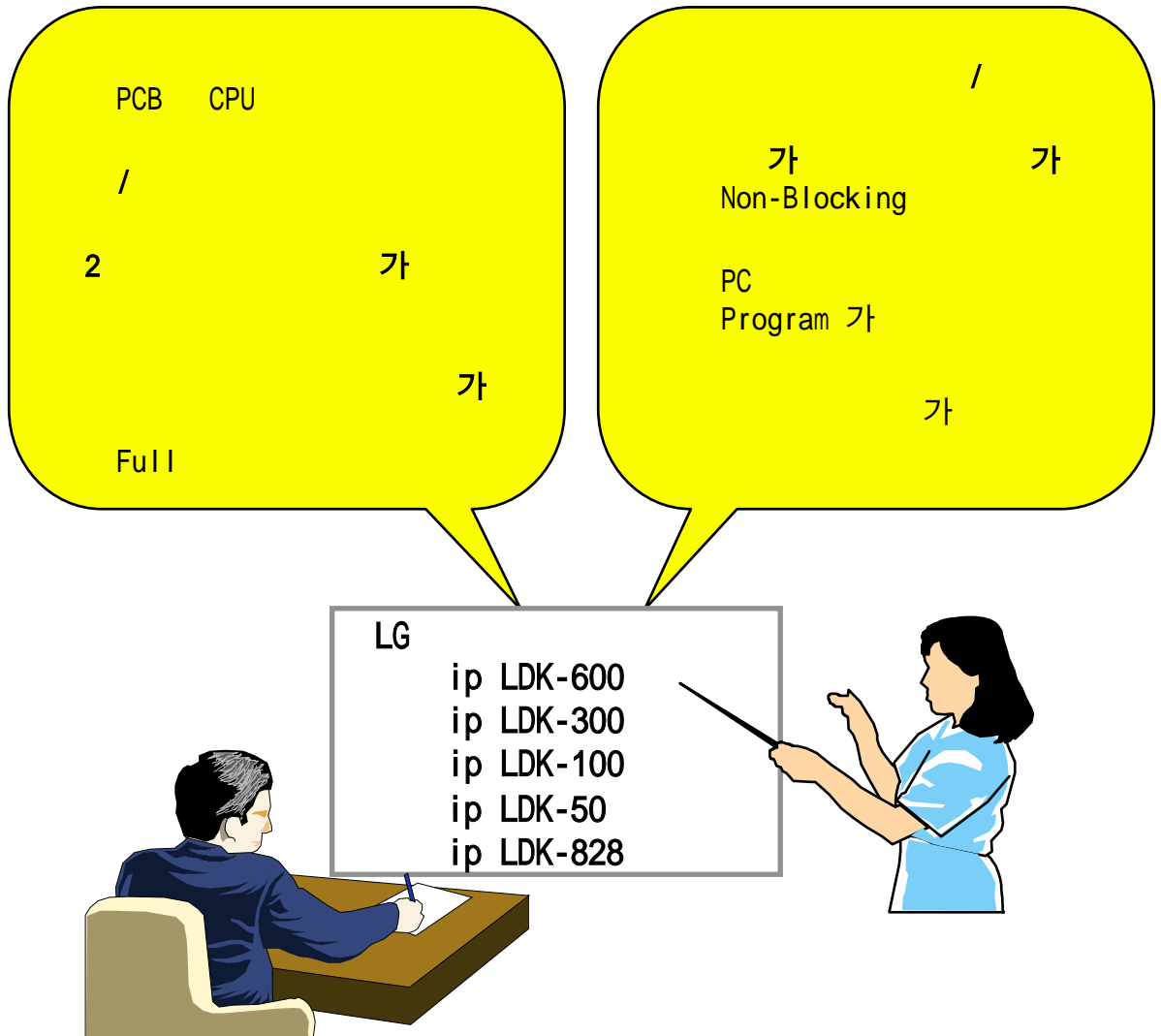
5)

=>

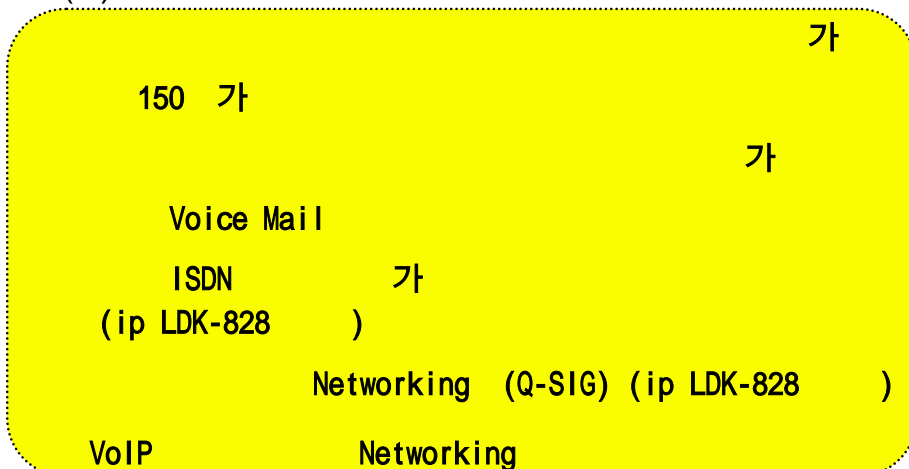
PC
PC S/W Up-Grade (가) 가

3. LG (ip LDK)

1) (A)



2) (B)



. ip LDK-600



가 / 가

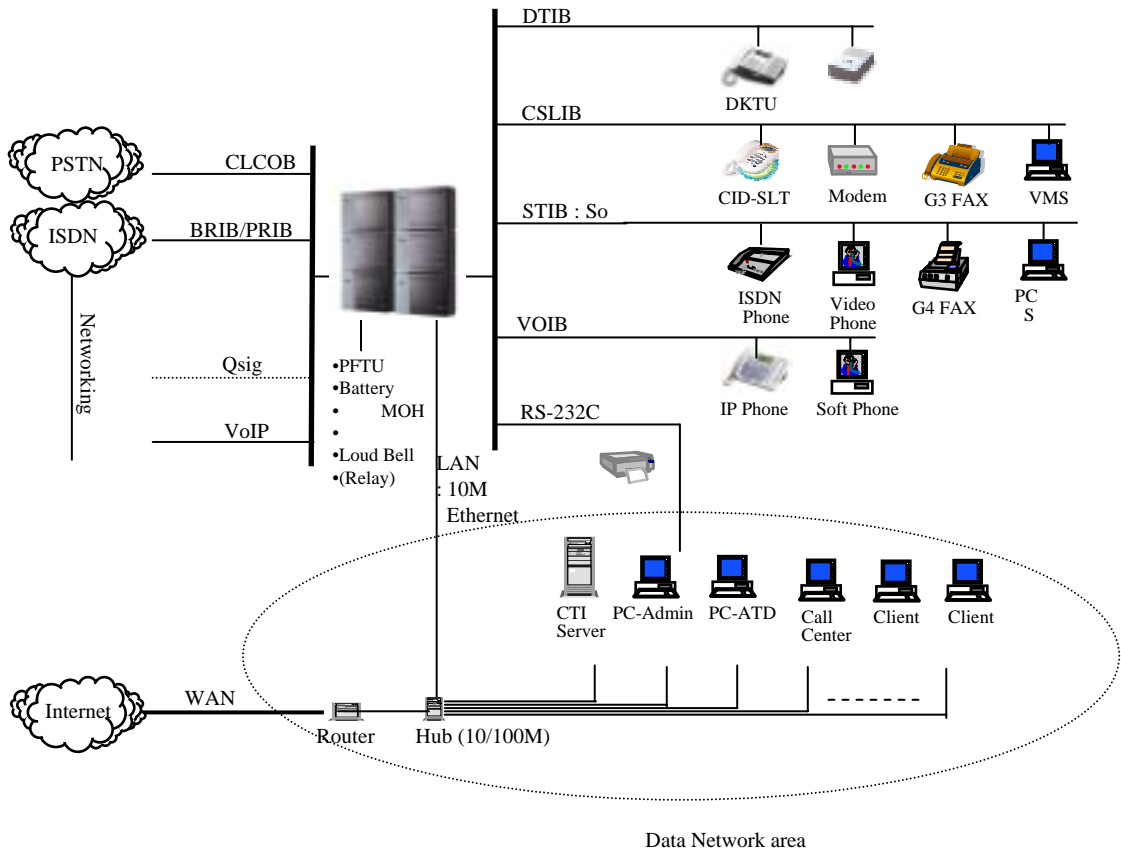
VoIP ip LDK-Series 가

Internet

H.323 SIP

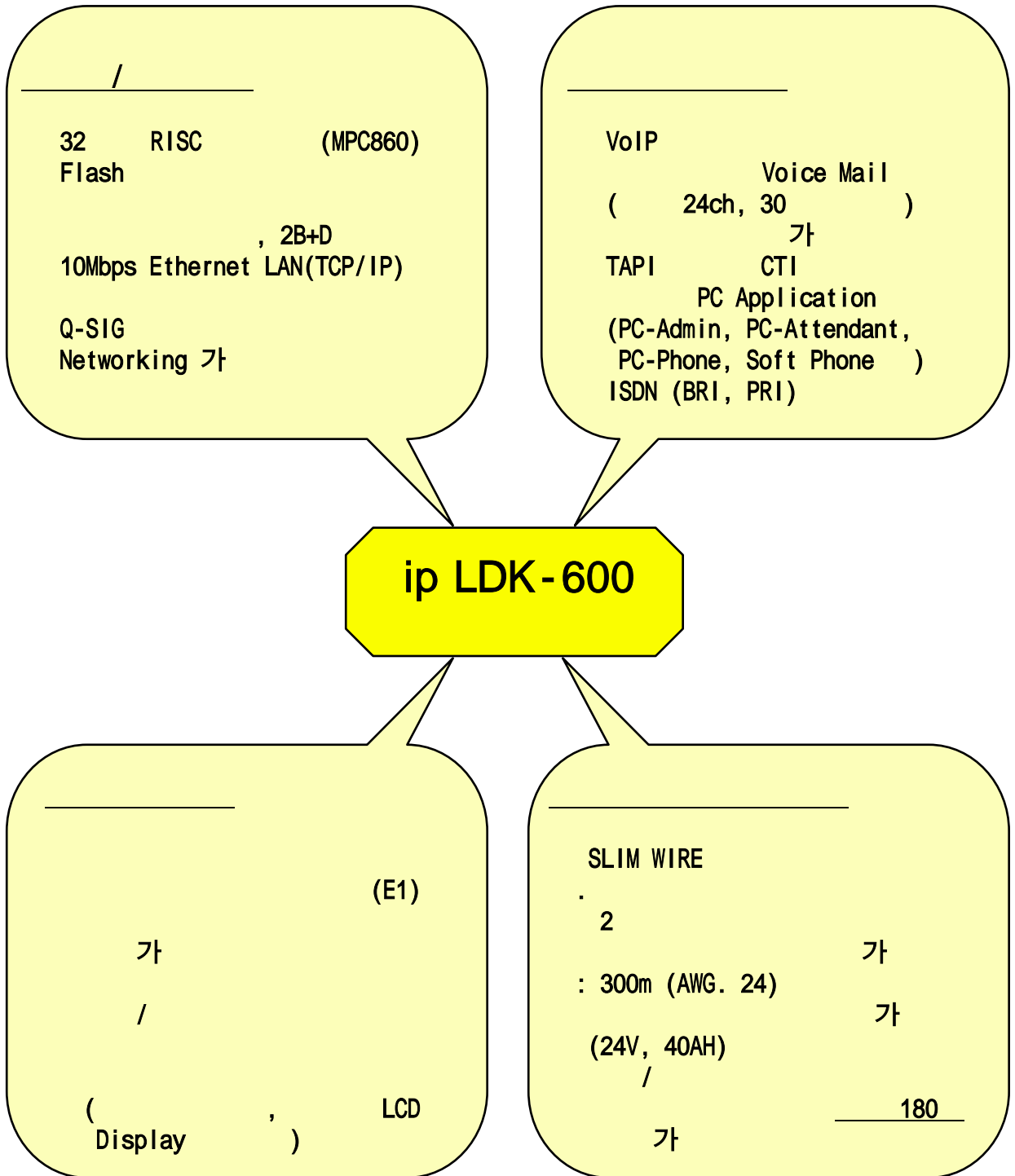
ISDN

가



. ip LDK - 600

1.

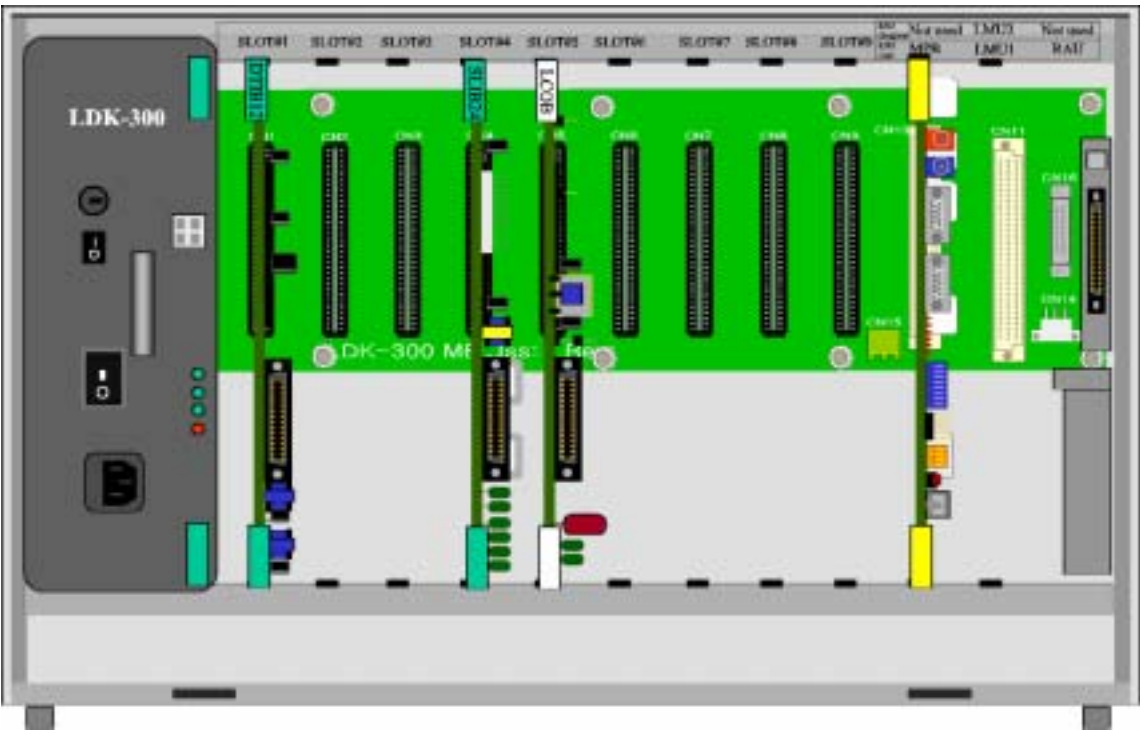


2.

1) (' ')
ip LDK-600 Master Expansion 2
3 Total
6 , 가 .
MPB Master (1st) 1 , MPB가
Master , LMUE Expansion (4th)
1 , LMUE가 Expansion ,
MPB LMUE .
MPB
가 .

(1)
MPB()가
LMU , RAU
/ LCOB, EMIB, R2DCOB(E1), DTIB, SLIB, CSLIB,
DSIB, BRIB, PRIB, STIB, VOIB, VMIB, AAIB, MISB
9 .

(2) 30
PFTU , 180
가 가 .
[]



PSU	1	2	3	4	5	6	7	8	9	MPB	LMU	RAU
	UNI	UNI	UNI	UNI	UNI	UNI	UNI	UNI	uni	MPB	LMU	RAU

- MPB : MPB ()
- MISB : 9 가
- RAU : RAU ()
- UNI : (Universal slot)
- uni : (, PRIB, STIB, BRIB, VOIB, VMIB,AAIB 7)

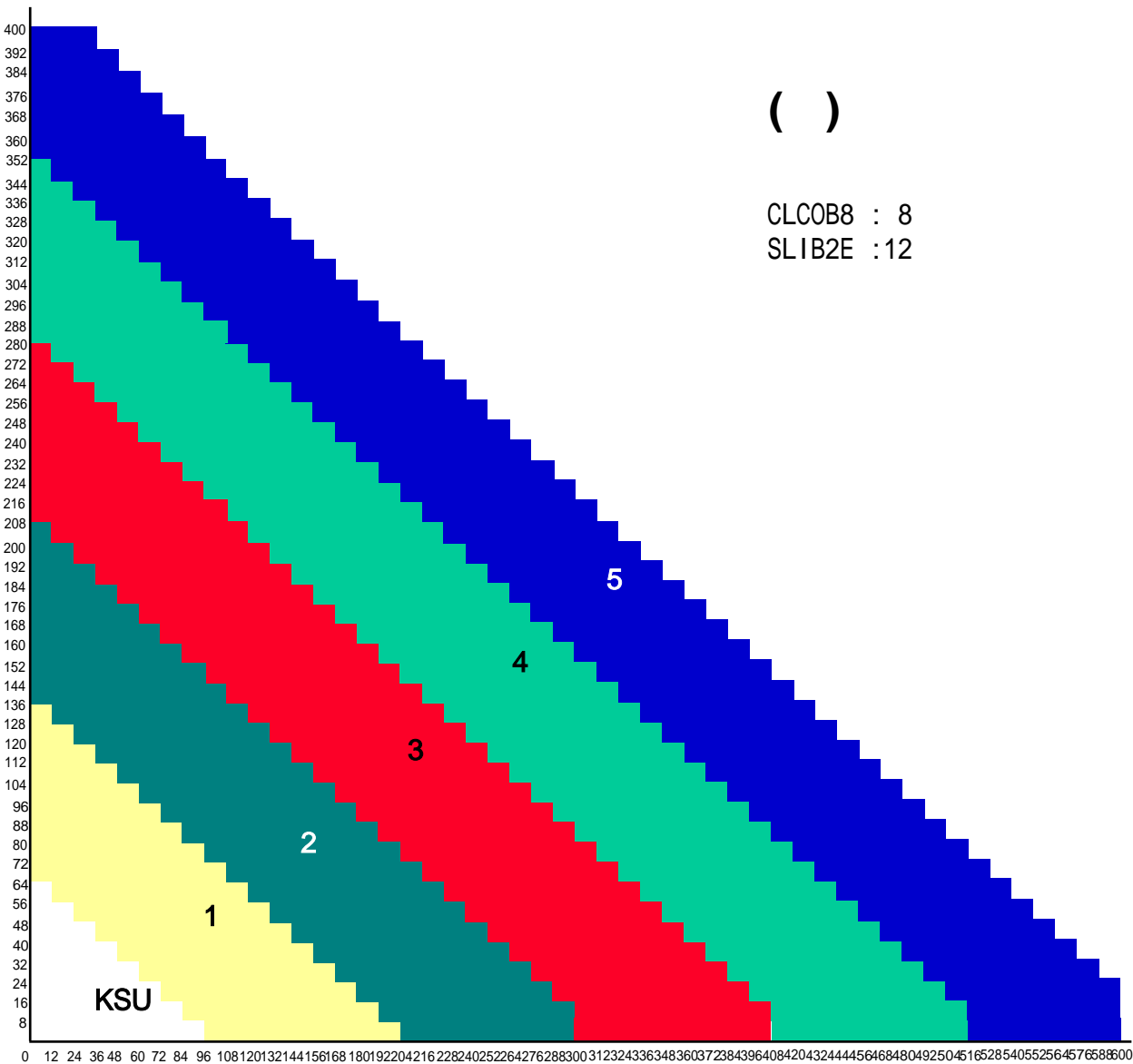
2)

	110V or 220V ± 10%
	350W Max.
	DC 24V 40AH
AC	4.0A/ 220V or 6.0A/110V

* . 24V ,

3)

(1) 600 , ISDN 가
 , 가
CLOCB8(8) , SLIB2E(12)



(2)

ip LDK-600
GDK-100AGDK-100A
MPB, ETIB, E1IB, DVIBip LDK-300
ip LDK-300

MPB

가

No			가		
			KSU	KSU	
1	PSU		PSU		(Power Supply Unit), 350W
2	PSU3		PSU		(Power Supply Unit), 250W(GDK-100A)
3	MPB		MPB		(Main Processor Board), 1st KSU
4	LMUE			MPB	(Link Module Unit Expansion), 4th KSU
5	MISB		9		(Miscellaneous Board)
6	DTIB12	12	1~9		(Digital Terminal Interface Board)
7	DTIB24	24	1~9		(Digital Terminal Interface Board)
8	SLIB24	6	1~9		(SLT Interface Board), +24V Feed
9	SLIB48	6	1~9		(SLT Interface Board), -48V Feed
10	SLIBII	12	1~9		(SLT Interface Board), -28V Feed
11	SLIB2E	12	1~9		(SLT Interface Board), -28V Feed
12	CSLIB12	12	1~9		(CID-SLT Interface Board), -28V Feed
13	CSLIB12E	12	1~9		(CID-SLT Interface Board), -28V Feed
14	DSIB	12	1~9		(Digital Terminal 6 and SLT6 Interface), +24V
15	LCOB	4	1~9		(Loop start CO Interface Board)
16	CLCOB4	4	1~8	1~9	(CID Loop start CO Interface Board)
17	LCOB8	8	1~9		(Loop start CO Interface Board)
18	CLCOB8	8	1~8	1~9	(CID Loop start CO Interface Board)
19	EMIB	4	1~9		E&M (E&M Line Interface Board), 2wire E&M
20	TLIB8	8	1~9		R/D E&M (Tie Line Interface Board)
21	DIDB	4	1~9		DID (Direct Inward Dialing Interface Board)
22	STIB	4 (8B)	1~8	1~9	ISDN So/To (So/To Interface Board), 2B+D
23	BRIB	4 (8B)	1~8	1~9	ISDN BRI (Basic Rate Interface Board), 2B+D
24	PRIB	1 (30B)	1~8	1~9	ISDN PRI (Primary Rate Interface Board), 30B+D
25	R2DCOB	1 (30B)	1~8	1~9	R2 E1 (R2-MFC Digital CO Interface Board), 30B+D
26	VOIB		1~8	1~9	VoIP (Voice Over Internet Protocol Interface Board)
27	VOIBE		1~8	1~9	VoIP (Voice Over Internet Protocol Interface Board)
28	VMIB	4	1~8	1~9	(Voice Mail Interface Board)
29	AAIB	4	1~8	1~9	AA (Auto Attendant Interface Board)
30	LMU1		LMU		(Link Module Unit 1), KSU
31	LMU2			LMU	(Link Module Unit 2), KSU
32	RAU		RAU		(Relay Alarm Unit)
33	MODU		MPB		(Modem Unit), 33.6Kbps
34	SIU	2	MISB		RS-232C (Serial Interface Unit)
35	DTRU	2	SLIB24/48, DSIB, LCOB, EMIB, DIDB		DTMF (DTMF Receiver Unit)
36	DTRUII	4	SLIBII		DTMF (DTMF Receiver Unit)
37	DTRU4	4	SLIBII, SLIB2E, LCOB8, CLCOB4/8, TLIB8		DTMF (DTMF Receiver Unit)
38	CPTU/A	2	LCOB		(Call Progress Tone Detection Unit),
39	CPTU/B	2	LCOB		(Call Progress Tone Detection Unit),
40	CPTU4/A	4	LCOB8		(Call Progress Tone Detection Unit),
41	CPTU4/B	4	LCOB8		(Call Progress Tone Detection Unit),
42	CPTU4/C	4	LCOB8, CLCOB4/8		(Call Progress Tone Detection Unit),
43	CMU	1	LCOB		(Call Metering Unit)
44	CMU4	4	LCOB8		(Call Metering Unit)
45	CIDU4	4	CLCOB4		Caller ID (Caller ID Unit), CMU
46	CIDU	8	CLCOB8		Caller ID (Caller ID Unit), CMU
47	VOIU	1 (2B)	VOIB		VoIP (VoIP Unit)
48	FMEU	5	VMIB		VMIB (Flash Memory Expansion Unit)
49	VCEU	4	VMIB		VMIB/AAIB (Voice Channel Expansion Unit)
50	PFTU	6			(Power Failure Transfer Unit)
51	RGU5	Max 15 SLT			(Ring Generator Unit),
52	RGU	Max 15 SLT			(Ring Generator Unit),
53	MOHU	2	SLT		MOH (Music On Hold Unit)

* ip LDK-50/100

4)

(ip LDK-600)

(L)630mm (W)238mm (H)411mm



(ip LDK-600)

+



(ip LDK-600 6)

(L)290mm (W)230mm (H)110mm

LDP-Series
가

MFU



(LDP-6030DH)



(LDP-6042DH)



(LDP-6024LDH)



(LKD-30D)



(LKD-44D)



(LKD-30LD)



(LKD-30HD)

DSS/DLS(/)
(L)125mm (W)236mm (H) 62mm

(L)140mm (W)108mm (H) 40mm



(LDP DSS)



(LKD DSS)



(PHONE BOX)

IP



(LIP-6030DH)



(LIP-6012DH)



(LIP-6004N)



(LIP-24DH)



(WIT-300H)



(LIP-6000Series DSS)

3.

1) (MPB)

CPU (ROM, RAM)
10Mbps Ethernet LAN 1, RS-232C 2,
(MOH) 1, DTMF 4, PLL

2) (CLCOB4/CLOCB8)

가 (LOOP START)
가
: 4 / 1 (CLCOB4)
8 / 1 (CLCOB8)
(, , 가) LED

4/8 COMBO IC가

CIDU

3) (R2DCOB)

가 (R2 E1)
: 30 / 1
SLOT #9 Expansion
6 가

CCITT G.703, G.704, G.823

NT() MASTER
, ip LDK-600 TE SLAVE가 , PLL
, MPB

4) (DTIB 12/24)

: 12, 24 / 1
: 2B + D
(B :
D :)

5) (SLIB24/48/SLIB11/SLIB2E, CSLIB12, CSLIB12E)

. : 6 / 1 (SLIB24/48, +24V / -48V 2)
 12 / 1 (SLIB11,SLIB2E -28V)
 12 / 1 (CSLIB12,CSLIB12E -28V CID)
 CSLIB12E CSIU12E 가 24 가

6) (MISB)

(MOH), , RS-232C 가

9

7)

(VMIB:Voice Mail Interface Board, AAIB: Auto Attendant Interface Board)

VMIB DISA / ACD/UCD ,
 MOH , 가 . (VMIB 4 , 5 가)

AAIB DISA / ACD/UCD ,
 MOH 가 , 가 .
 (AAIB 4 , 10 가)

VMIB/AAIB 1 VCEU 가 4 ,
 VMIB FMEU 가 5 ,
 VMIB 1 8 , 10 가 .
 VMIB AAIB 3 가 .
 (24 , 30)

8) ISDN

BRIB	2B + D	4	8
PRIB	30B + D	1	30

가 ISDN 가 ,
 ISDN 가
 DID 가

STIB ISDN
 가 .

9) VoIP (VOIB, VOIBE)

IP(Internet Protocol)가 ip LDK-Series Networking
Phone) , IP (IP , Soft
VOIB 1 2
VOIU 4 가 , VOIU 2
4
: 8 / 1
VOIBE 1 12 , VOIUE 1
가 12 가
: 24 / 1
1 Networking IP 가

10) (EMIB/TLIB8)

EMIB 2wire E&M
: 4 / 1
TLIB8 2wire E&M R/D
: 8 / 1

11) CARD

CARD	
(PFTU)	.(6 /1)
(RGU)	10
(MODU)	33.6K
(CPTU)	DISA
DTMF (DTRU)	DISA DTMF

4.

1)

(DTIB) .

가

	LCD : 30 , 42 , 44 Large LCD : 24 , 30
	LDP-6030DH, LDP-6042DH, LDP-6024LDH LKD-30D, LKD-44D, LKD-30LD, LKD-30DH

2) (SLT)

(SLIB, CSLIB) .

가

	GS-460, GS-460F, LKA-100, LKA-100F
--	------------------------------------

3) IP

IP (VOIB, VOIBE) .

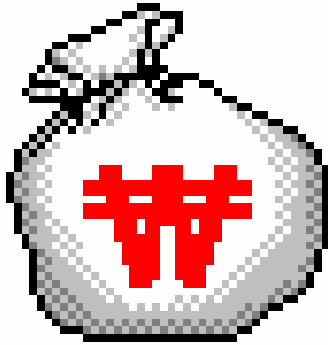
가 IP

	LCD : 4 LCD : 12 , 24 , 30 , WiFi
	LIP-6004N, LIP-6012DH, LIP-24DH, LIP-6030DH, WIT-300H

4)

DSS/DLS ()	/ .
	.

5) 가 .



VoIP 가

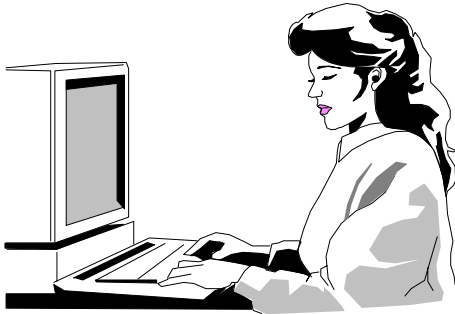
Networking

/

3

가 ()

6) 가 .

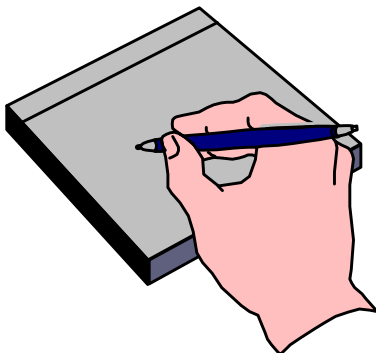


PSTN, ISDN, LAN
가

Power On DTMF

S/W Up-Grade 가

7)



CTI (PC-Phone) 가
()

가